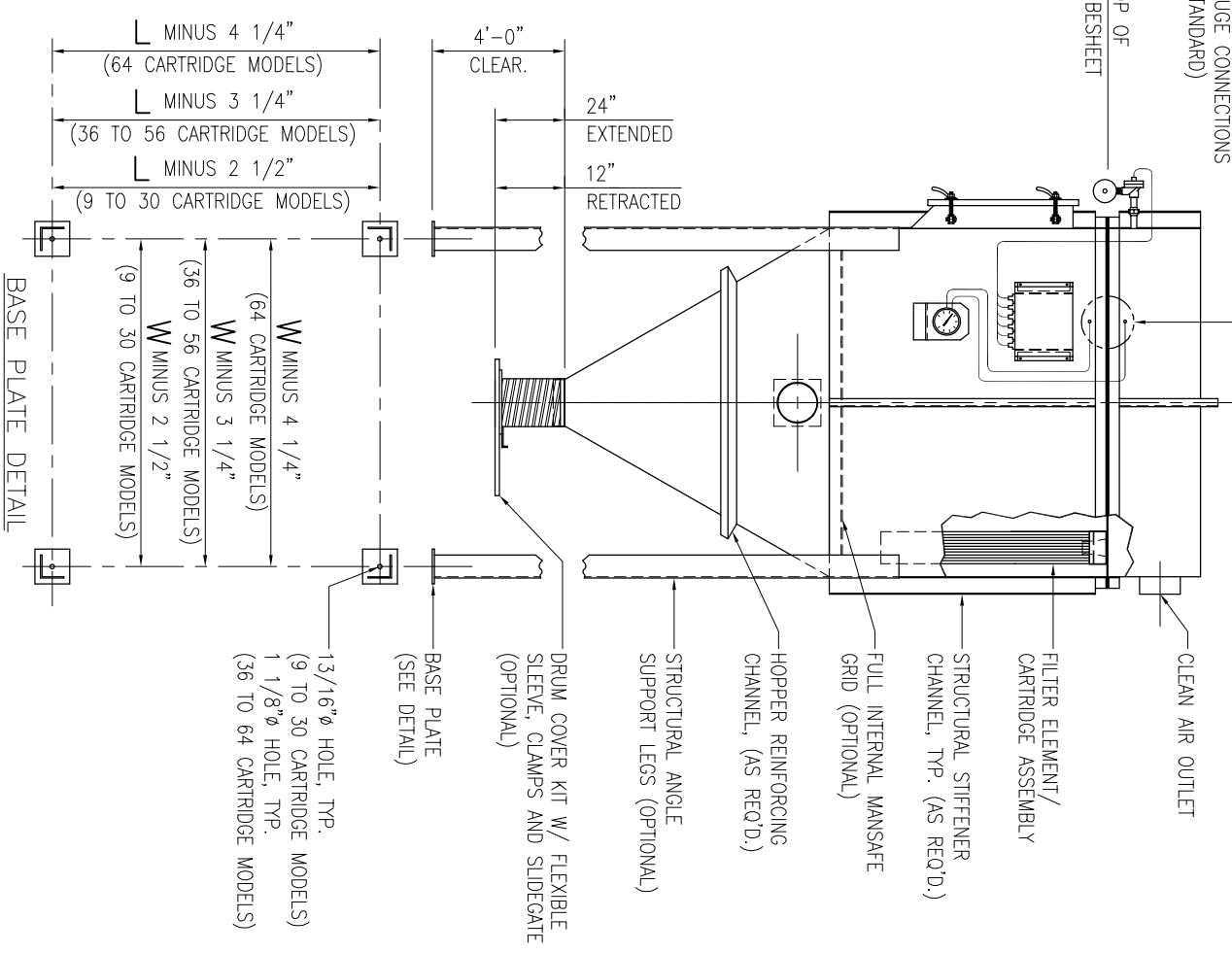
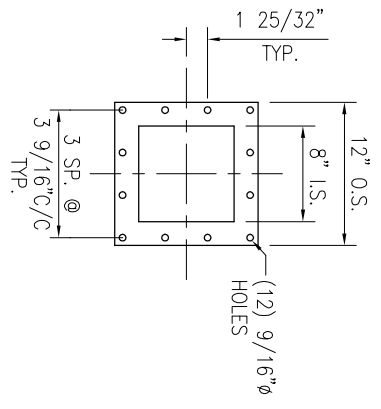


COMPONENT ORIENTATION & OPTIONS  
CUSTOMER TO INDICATE MODEL, LOCATION OF COMPONENTS, AND OUTLET SIZE



MODEL	FILTER AREA (SQ.FT.)	L	W	HH	DH	CH	OH	NO. OF AIR VALVES (STD)	EST. WT. (LBS.)
36-CNF-009	214	2'-6"	2'-6"	1'-8"	4'-0"	1'-3"	6'-11"	3	615
54-CNF-009	321	2'-6"	2'-6"	1'-8"	5'-6"	1'-3"	8'-5"	3	695
36-CNF-012	285	2'-6"	3'-4"	2'-4"	4'-0"	1'-3"	7'-7"	3	775
54-CNF-012	428	2'-6"	3'-4"	2'-4"	5'-6"	1'-3"	9'-1"	3	880
36-CNF-016	380	3'-4"	3'-4"	2'-4"	4'-0"	1'-6"	7'-10"	4	1,030
54-CNF-016	570	3'-4"	3'-4"	2'-4"	5'-6"	1'-6"	9'-4"	4	1,150
36-CNF-020	475	3'-4"	4'-2"	3'-1"	4'-0"	1'-6"	8'-7"	4	1,300
54-CNF-020	713	3'-4"	4'-2"	3'-1"	5'-6"	1'-6"	10'-1"	4	1,450
36-CNF-025	594	4'-2"	4'-2"	3'-1"	4'-0"	1'-6"	8'-7"	5	1,490
54-CNF-025	891	4'-2"	4'-2"	3'-1"	5'-6"	1'-6"	10'-1"	5	1,650
36-CNF-030	713	4'-2"	5'-0"	3'-10"	4'-0"	1'-6"	9'-4"	5	1,600
54-CNF-030	1,069	4'-2"	5'-0"	3'-10"	5'-6"	1'-6"	10'-10"	5	1,760
36-CNF-036	855	5'-0"	5'-0"	3'-10"	4'-0"	1'-9"	9'-7"	6	2,150
54-CNF-036	1,283	5'-0"	5'-0"	3'-10"	5'-6"	1'-9"	11'-1"	6	2,330
36-CNF-042	998	5'-0"	5'-10"	4'-6"	4'-0"	1'-9"	10'-3"	6	2,660
54-CNF-042	1,496	5'-0"	5'-10"	4'-6"	5'-6"	1'-9"	11'-9"	6	2,890
36-CNF-049	1,164	5'-10"	5'-10"	4'-6"	4'-0"	1'-9"	10'-3"	7	3,240
54-CNF-049	1,746	5'-10"	5'-10"	4'-6"	5'-6"	1'-9"	11'-9"	7	3,450
36-CNF-056	1,330	5'-10"	6'-8"	5'-3"	4'-0"	1'-9"	11'-0"	7	3,400
54-CNF-056	1,995	5'-10"	6'-8"	5'-3"	5'-6"	1'-9"	12'-6"	7	3,640
36-CNF-064	1,520	6'-8"	6'-8"	5'-3"	4'-0"	1'-9"	11'-0"	8	3,720
54-CNF-064	2,280	6'-8"	6'-8"	5'-3"	5'-6"	1'-9"	12'-6"	8	3,950

- OUTLET SIZES SHALL BE BASED ON A RECOMMENDED 3,000-4,000 FT./MIN. AIR VELOCITY, UNLESS OTHERWISE SPECIFIED.
- INLET SIZES SHALL BE BASED ON A RECOMMENDED 3,500-4,500 FT./MIN. AIR VELOCITY, UNLESS OTHERWISE SPECIFIED.
- DESIGN PRESSURE IS ±20" W.G., UNLESS OTHERWISE SPECIFIED.
- THE COMPRESSED AIR REQUIREMENT IS BASED ON CLEAN, DRY, OIL-FREE AIR @ 60-80 PSIG (BASED ON CARTRIDGE LENGTH), 8 SECOND OFF-TIME, AND 0.15 SECOND ON-TIME. A DEW POINT OF -20° F IS SUFFICIENT.
- MODELS WITH 25 CARTRIDGES OR LESS HAVE INTERNALLY WELDED TUBESHEETS. MODELS WITH 30 CARTRIDGES OR MORE HAVE EXTERNALLY FLANGED TUBESHEETS.
- AS STANDARD, EXTERIOR CARBON STEEL SURFACES ARE SOLVENT WIPED PER SSPC-SP1, POWER TOOL CLEANED PER SSPC-SP3, AND COATED WITH A MEDIUM OIL ALKID PRIMER @ 2 MILS D.F.T. (OTHER PRIMERS & FINISH COATS ARE AVAILABLE).
- AS STANDARD, SOLENOID VALVES ARE PRE-WIRED TO THE TIMER AND MOUNTED IN A COMMON NEMA 4 ENCLOSURE (OTHER ENCLOSURES ARE AVAILABLE). TIMER & SOLENOIDS ARE RATED FOR 1 PH/60 HZ/120 V.
- HOPPER HEIGHT DIMENSIONS ARE BASED ON A 8" SQUARE MATERIAL DISCHARGE OPENING & 60° SLOPE FROM HORIZONTAL (OTHER SIZES AVAILABLE).
- ESTIMATED WEIGHTS ARE BASED ON STANDARD ASSEMBLED UNITS EXCLUDING ANY AUXILIARIES.
- THIS DRAWING IS TO BE USED FOR LAYOUT AND ENGINEERING PURPOSES ONLY. IT IS NOT TO BE USED FOR CONSTRUCTION, UNLESS STAMPED AS CERTIFIED.



MATERIAL DISCHARGE FLANGE DETAIL  
3/8" THK. PLATE  
(C.P.E.F. STANDARD, OTHER BOLT PATTERNS DRILLED UPON REQUEST)

REV	BY	DATE	DESCRIPTION



5 EARL COURT, SUITE 130  
WOODRIDGE, IL 60517  
P. 630-771-9993  
E. info@cpef.com  
Web: www.cpef.com  
© COPYRIGHT:

THIS DOCUMENT IS THE EXCLUSIVE PROPERTY OF CPE FILTERS, INC. AND SHALL NOT BE REPRODUCED OR DISTRIBUTED WITHOUT FIRST OBTAINING THE PERMISSION OF CPE FILTERS, INC.  
SCALE: \_\_\_\_\_ INITIATED BY: \_\_\_\_\_ DRAWN BY: \_\_\_\_\_  
DATE: \_\_\_\_\_ APPROVED BY: \_\_\_\_\_  
TITLE: CARTRIDGE NOISANCE FILTER SERIES PLANOGRAPH  
DWG. NUMBER: P-CNF-001  
REV. 0  
CUSTOMER: \_\_\_\_\_