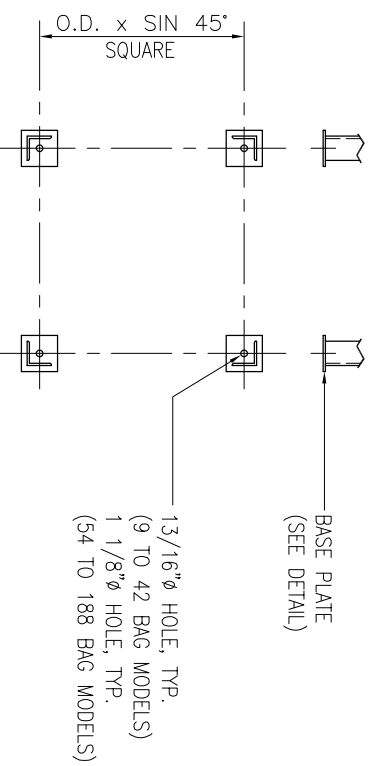
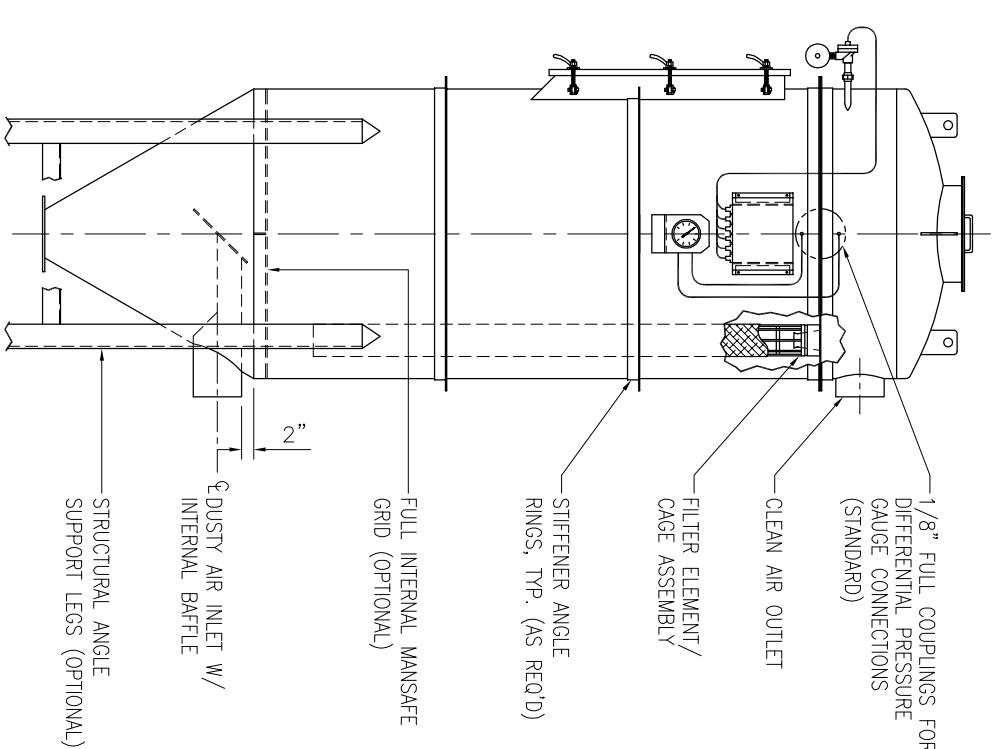
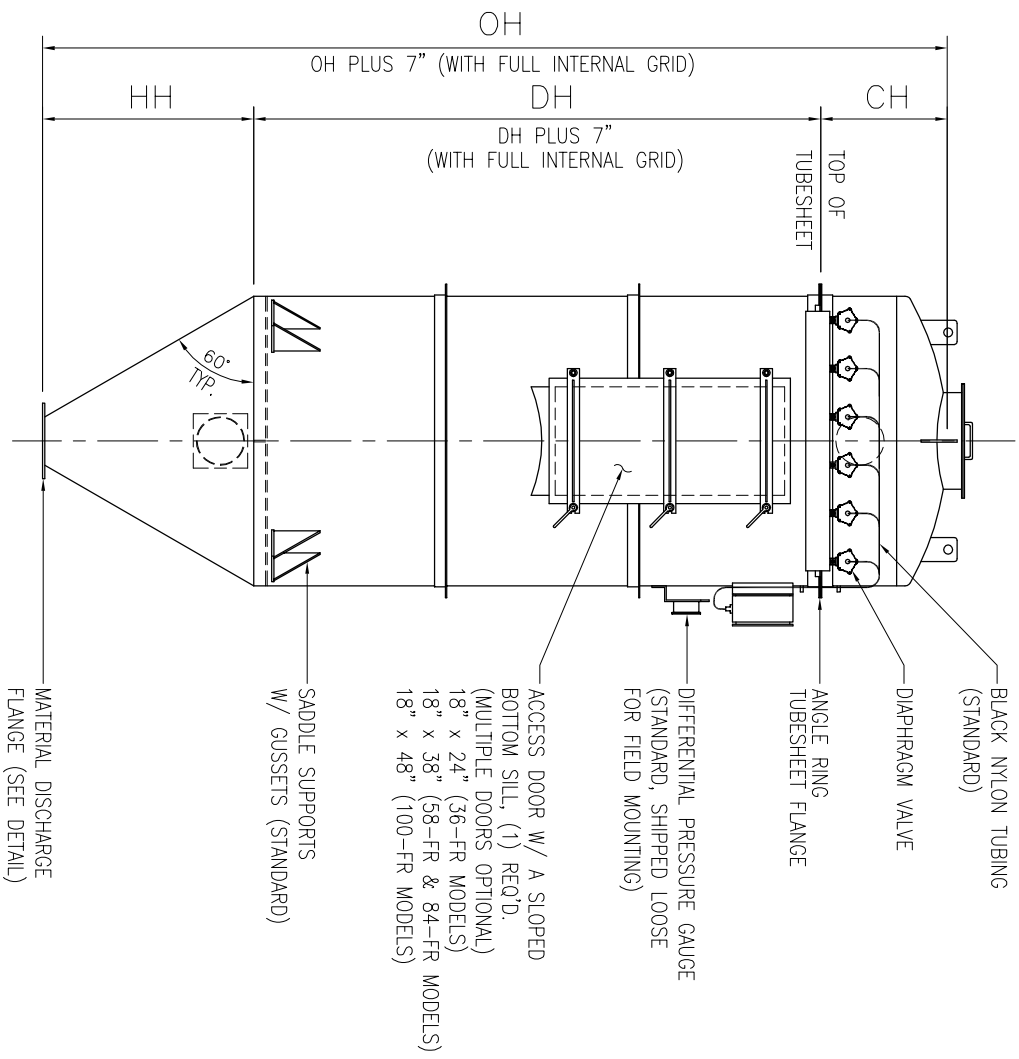


COMPONENT ORIENTATION & OPTIONS  
CUSTOMER TO INDICATE MODEL, LOCATION  
OF COMPONENTS, AND INLET/OUTLET SIZES

MODEL: \_\_\_\_\_  
 INLET: \_\_\_\_\_ SIZE: \_\_\_\_\_  
 (ANY ANGULAR LOCATION BETWEEN 0° & 360°)  
 OUTLET: \_\_\_\_\_ SIZE: \_\_\_\_\_  
 (ANY ANGULAR LOCATION C.W. BETWEEN 90° & 270°)  
 ACCESS DOOR: \_\_\_\_\_  
 (0°, 90°, 180° OR 270°)  
 TIMER/SOLENOID ENCL. & DIFF. PRESSURE COUPLINGS: \_\_\_\_\_  
 (0°, 90° OR 270°)  
 SUPPORT SADDLES OR LEGS: \_\_\_\_\_  
 (0°, 90°, 180°, 270°) OR (45°, 135°, 225°, 315°)



MODEL	FILTER AREA SQ.FT.	OD	HH	DH	CH	OH	NO. OF VALVES	COMP. AIR REC'D. (SCFM)	EST. WT. (LBS.)
36-FR-009	41	2'-6"	1'-8"	3'-3"	1'-3"	6'-2"	3	8	450
58-FR-009	68	2'-6"	1'-8"	5'-1"	1'-3"	8'-0"	3	8	550
84-FR-009	97	2'-6"	1'-8"	7'-3"	1'-3"	10'-2"	3	8	675
36-FR-014	64	3'-0"	2'-1"	3'-3"	1'-6"	6'-10"	4	8	580
58-FR-014	105	3'-0"	2'-1"	5'-1"	1'-6"	8'-8"	4	8	750
84-FR-014	151	3'-0"	2'-1"	7'-3"	1'-6"	10'-10"	4	8	900
36-FR-021	97	3'-6"	2'-6"	3'-3"	1'-8"	7'-5"	5	8	750
58-FR-021	158	3'-6"	2'-6"	5'-1"	1'-8"	9'-3"	5	8	900
84-FR-021	227	3'-6"	2'-6"	7'-3"	1'-8"	11'-5"	5	8	1250
36-FR-026	120	4'-0"	2'-11"	3'-3"	1'-10"	8'-0"	6	8	1100
58-FR-026	195	4'-0"	2'-11"	5'-1"	1'-10"	9'-10"	6	8	1300
84-FR-026	281	4'-0"	2'-11"	7'-3"	1'-10"	12'-0"	6	8	1600
58-FR-033	248	4'-6"	3'-4"	5'-1"	2'-1"	10'-6"	7	8	1600
84-FR-033	356	4'-6"	3'-4"	7'-3"	2'-1"	12'-8"	7	8	1900
100-FR-033	422	4'-6"	3'-4"	8'-7"	2'-1"	14'-0"	7	8	2000
58-FR-042	315	5'-0"	3'-10"	5'-1"	2'-5"	11'-4"	8	8	1800
84-FR-042	454	5'-0"	3'-10"	7'-3"	2'-5"	13'-6"	8	8	2200
100-FR-042	538	5'-0"	3'-10"	8'-7"	2'-5"	14'-10"	8	8	2500
58-FR-054	405	5'-6"	4'-3"	5'-1"	2'-6"	11'-10"	8	8	2500
84-FR-054	583	5'-6"	4'-3"	7'-3"	2'-6"	14'-0"	8	8	3000
100-FR-054	691	5'-6"	4'-3"	8'-7"	2'-6"	15'-4"	8	8	3200
58-FR-063	473	6'-0"	4'-8"	5'-1"	2'-8"	12'-5"	9	8	2900
84-FR-063	680	6'-0"	4'-8"	7'-3"	2'-8"	14'-7"	9	8	3400
100-FR-063	806	6'-0"	4'-8"	8'-7"	2'-8"	15'-11"	9	15	3600
58-FR-074	555	6'-6"	5'-1"	5'-1"	2'-11"	13'-1"	10	8	3200
84-FR-074	799	6'-6"	5'-1"	7'-3"	2'-11"	15'-3"	10	15	3900
100-FR-074	947	6'-6"	5'-1"	8'-7"	2'-11"	16'-7"	10	15	4100
58-FR-087	653	7'-0"	5'-6"	5'-1"	3'-3"	13'-10"	11	15	3900
84-FR-087	940	7'-0"	5'-6"	7'-3"	3'-3"	16'-0"	11	15	4500
100-FR-087	1114	7'-0"	5'-6"	8'-7"	3'-3"	17'-4"	11	15	4700
58-FR-106	795	7'-6"	6'-0"	5'-1"	3'-5"	14'-6"	12	15	5100
84-FR-106	1145	7'-6"	6'-0"	7'-3"	3'-5"	16'-8"	12	15	5900
100-FR-106	1357	7'-6"	6'-0"	8'-7"	3'-5"	18'-0"	12	15	6300
84-FR-121	1306	8'-0"	6'-5"	7'-3"	3'-7"	17'-3"	13	15	6600
100-FR-121	1548	8'-0"	6'-5"	8'-7"	3'-7"	18'-7"	13	15	6900
84-FR-134	1447	8'-6"	6'-10"	7'-3"	4'-0"	18'-1"	14	15	7200
100-FR-134	1715	8'-6"	6'-10"	8'-7"	4'-0"	19'-5"	14	15	7600
84-FR-150	1620	9'-0"	7'-3"	7'-3"	4'-1"	18'-7"	14	30	8200
100-FR-150	1920	9'-0"	7'-3"	8'-7"	4'-1"	19'-11"	14	30	8700
84-FR-176	1901	9'-6"	7'-8"	7'-3"	4'-4"	19'-3"	16	30	9100
100-FR-176	2253	9'-6"	7'-8"	8'-7"	4'-4"	20'-7"	16	30	9500
84-FR-188	2030	10'-0"	8'-1"	7'-3"	4'-7"	19'-11"	16	30	9800
100-FR-188	2406	10'-0"	8'-1"	8'-7"	4'-7"	21'-3"	16	30	10300

1. OUTLET SIZES SHALL BE BASED ON A RECOMMENDED 3,000-4,000 FT./MIN. AIR VELOCITY, UNLESS OTHERWISE SPECIFIED.
2. INLET SIZES SHALL BE BASED ON A RECOMMENDED 4,000-5,000 FT./MIN. VELOCITY, UNLESS OTHERWISE SPECIFIED.
3. DESIGN PRESSURE IS ±17" Hg., UNLESS OTHERWISE SPECIFIED.
4. THE COMPRESSED AIR REQUIREMENT IS BASED ON CLEAN, DRY, OIL FREE AIR @ 70-100 PSIG (BASED ON BAG LENGTH), 8 SECOND OFF-TIME, AND 0.15 SECOND ON-TIME. A DEW POINT OF -20° F IS SUFFICIENT.
5. AS STANDARD, EXTERIOR CARBON STEEL SURFACES ARE SOLVENT WIPED PER SSPC-SP1, POWER TOOL CLEANED, PER SSPC-SP3, AND COATED WITH A MEDIUM OIL ALKID PRIMER @ 2 MILS DFT. (OTHER PRIMERS & FINISH COATS ARE AVAILABLE).
6. AS STANDARD, SOLENOID VALVES ARE PRE-WIRED TO THE TIMER AND MOUNTED IN A COMMON NEMA 4 ENCLOSURE (OTHER ENCLOSURES ARE AVAILABLE). TIMER & SOLENOIDS ARE RATED FOR 1 PH/60 Hz/120 V.
7. HOPPER HEIGHT DIMENSIONS ARE BASED ON AN 8" DIAMETER MATERIAL DISCHARGE OPENING & 60° SLOPE FROM HORIZONTAL (OTHER SIZES AVAILABLE).
8. ESTIMATED WEIGHTS ARE BASED ON STANDARD ASSEMBLED UNITS EXCLUDING ANY AUXILIARIES.
9. THIS DRAWING IS TO BE USED FOR LAYOUT AND ENGINEERING PURPOSES ONLY. IT IS NOT TO BE USED FOR CONSTRUCTION, UNLESS STAMPED AS CERTIFIED.

THIS DRAWING SUPERCEDES  
DRAWING #PG-102-0

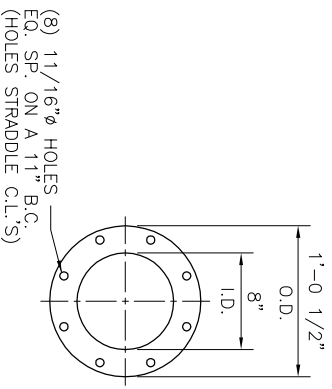
REV	BY	DATE	DESCRIPTION

THIS DOCUMENT IS THE EXCLUSIVE PROPERTY OF CPE FILTERS, INC. AND SHALL NOT BE REPRODUCED OR DISTRIBUTED WITHOUT FIRST OBTAINING THE PERMISSION OF CPE FILTERS, INC. © COPYRIGHT:

**CPE FILTERS, INC.**  
 5 EARL COURT, SUITE 130  
 WOODBRIDGE, IL 60517  
 P: 630-771-9993  
 E: info@cpef.com  
 Web: www.cpef.com

SCALE: \_\_\_\_\_ INITIATED BY: \_\_\_\_\_  
 DATE: \_\_\_\_\_ DRAWN BY: \_\_\_\_\_  
 TITLE: **FILTER RECEIVER SERIES PLANOGRAPH** APPROVED BY: \_\_\_\_\_  
 CUSTOMER: \_\_\_\_\_ DWG. NUMBER: **P-FR-001** REV: **0**

MATERIAL DISCHARGE FLANGE DETAIL  
(C.P.E.F. STANDARD, OTHER BOLT PATTERNS DRILLED UPON REQUEST)



BASE PLATE DETAIL