

MODEL: _____

INLET: _____ SIZE: _____
 (0°, 90°, 180° OR 270°)

OUTLET: _____ SIZE: _____
 (90°, 180° OR 270°)

ACCESS LADDER: _____
 (90°, 180° OR 270°)

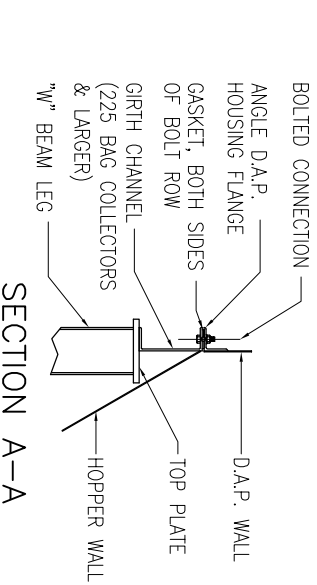
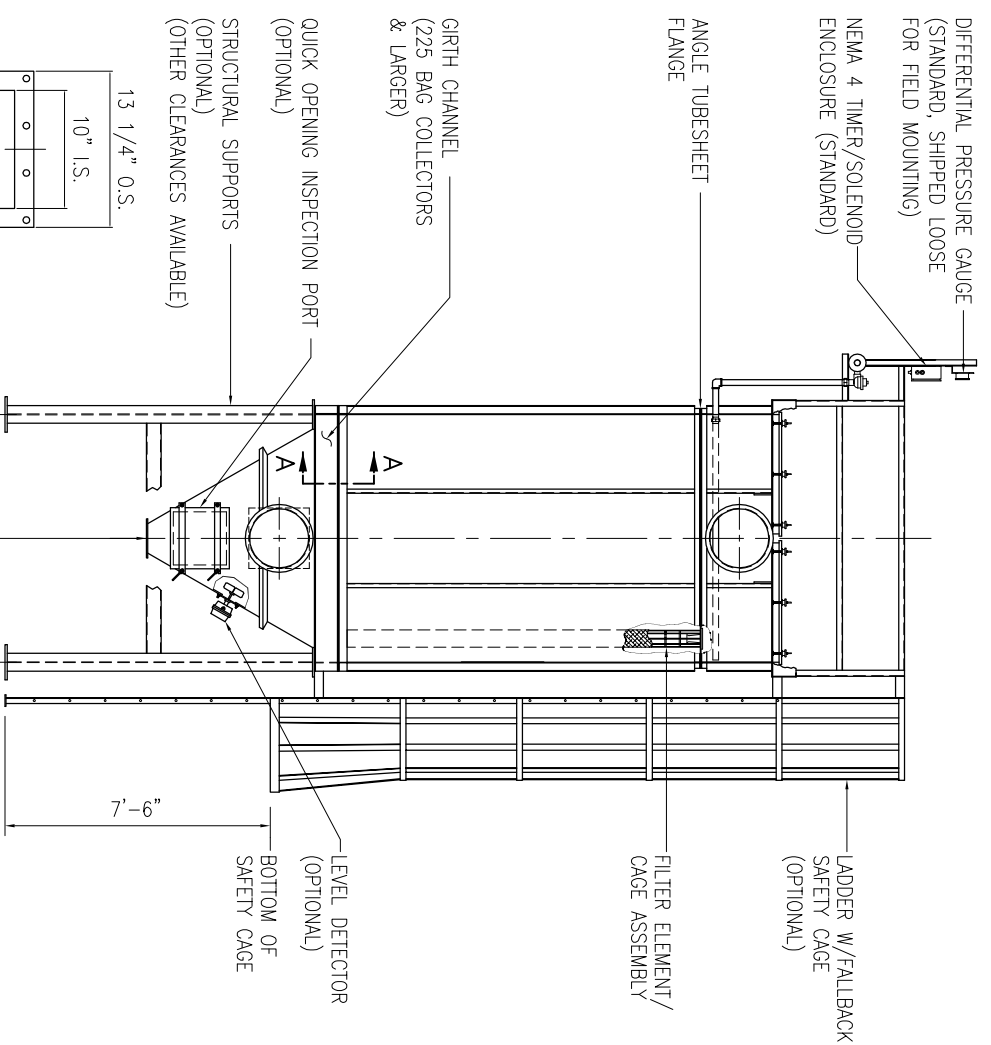
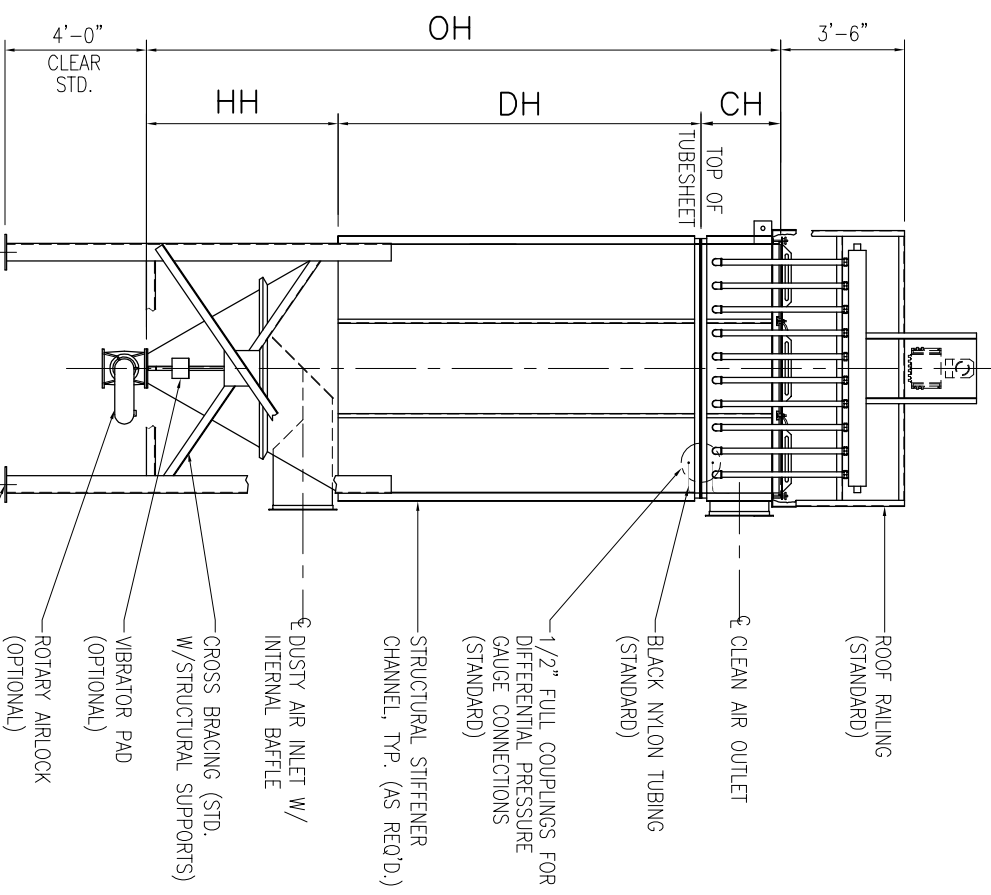
OPTIONAL HOPPER INSP. PORT: _____
 (0°, 90°, 180° OR 270°)

LEG ACCESS CLEARANCE: _____
 (SIDE W/ NO CROSS BRACING BELOW MATERIAL DISCHARGE FLANGE)
 (0°, 90°, 180° OR 270°)

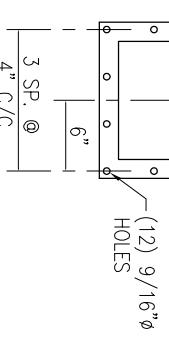
NOTE:
 DO NOT LOCATE MORE THAN ONE COMPONENT AT EACH POSITION ON THE HOPPER.

COMPONENT ORIENTATION & OPTIONS

CUSTOMER TO INDICATE MODEL, LOCATION OF COMPONENTS, AND INLET/OUTLET SIZES



MATERIAL DISCHARGE FLANGE DETAIL



MODEL	FILTER AREA SQ. FT.	L	W	HH	DH	CH	OH	NO. OF VALVES (SCFM)	COMP. WT. (LBS.)	EST. WT. (LBS.)
84-TNFD-049	534	5'-0"	5'-0"	3'-8"	7'-3"	2'-3"	13'-2"	7	8	3,700
100-TNFD-049	637	5'-0"	5'-0"	3'-8"	8'-7"	2'-3"	14'-6"	7	8	4,100
84-TNFD-064	698	5'-8"	5'-8"	4'-3"	7'-3"	2'-3"	13'-9"	8	8	4,200
100-TNFD-064	832	5'-8"	5'-8"	4'-3"	8'-7"	2'-3"	15'-1"	8	8	4,600
84-TNFD-081	883	6'-4"	6'-4"	4'-10"	7'-3"	2'-3"	14'-4"	9	15	4,800
100-TNFD-081	1,053	6'-4"	6'-4"	4'-10"	8'-7"	2'-3"	15'-8"	9	15	5,200
84-TNFD-100	1,090	7'-0"	7'-0"	5'-5"	7'-3"	2'-3"	14'-11"	10	15	6,000
100-TNFD-100	1,300	7'-0"	7'-0"	5'-5"	8'-7"	2'-3"	16'-3"	10	15	6,500
120-TNFD-100	1,560	7'-0"	7'-0"	5'-5"	10'-3"	2'-3"	17'-11"	10	30	7,100
100-TNFD-121	1,573	7'-8"	7'-8"	6'-0"	8'-7"	2'-3"	16'-10"	11	15	7,600
120-TNFD-121	1,888	7'-8"	7'-8"	6'-0"	10'-3"	2'-3"	18'-6"	11	30	8,300
100-TNFD-144	1,872	8'-4"	8'-4"	6'-6"	8'-7"	2'-3"	17'-4"	12	15	9,000
120-TNFD-144	2,246	8'-4"	8'-4"	6'-6"	10'-3"	2'-3"	19'-0"	12	30	9,700
100-TNFD-169	2,197	9'-0"	9'-0"	7'-1"	8'-7"	2'-3"	17'-11"	13	30	10,200
120-TNFD-169	2,636	9'-0"	9'-0"	7'-1"	10'-3"	2'-3"	19'-7"	13	30	11,000
100-TNFD-196	2,548	9'-8"	9'-8"	7'-8"	8'-7"	2'-3"	18'-6"	14	30	12,000
120-TNFD-196	3,058	9'-8"	9'-8"	7'-8"	10'-3"	2'-3"	20'-2"	14	30	12,700
100-TNFD-225	2,925	10'-4"	10'-4"	8'-3"	8'-7"	2'-3"	19'-1"	15	30	14,500
120-TNFD-225	3,510	10'-4"	10'-4"	8'-3"	10'-3"	2'-3"	20'-9"	15	30	15,500
100-TNFD-256	3,328	11'-0"	11'-0"	8'-10"	8'-7"	2'-3"	19'-8"	16	30	15,900
120-TNFD-256	3,994	11'-0"	11'-0"	8'-10"	10'-3"	2'-3"	21'-4"	16	30	17,000
100-TNFD-289	3,757	11'-8"	11'-8"	9'-5"	8'-7"	2'-3"	20'-3"	17	30	17,700
120-TNFD-289	4,508	11'-8"	11'-8"	9'-5"	10'-3"	2'-3"	21'-11"	17	30	18,900
100-TNFD-324	4,212	12'-4"	12'-4"	10'-0"	8'-7"	2'-3"	20'-10"	18	30	19,000
120-TNFD-324	5,054	12'-4"	12'-4"	10'-0"	10'-3"	2'-3"	22'-6"	18	30	20,300
100-TNFD-361	4,693	13'-0"	13'-0"	8'-7"	8'-7"	2'-3"	21'-5"	19	30	20,600
120-TNFD-361	5,632	13'-0"	13'-0"	10'-7"	10'-3"	2'-3"	23'-1"	19	30	22,000

- OUTLET SIZES SHALL BE BASED ON A RECOMMENDED 3,000-4,000 FT./MIN. AIR VELOCITY, UNLESS OTHERWISE SPECIFIED.
- INLET SIZES SHALL BE BASED ON A RECOMMENDED 3,500-4,500 FT./MIN. VELOCITY, UNLESS OTHERWISE SPECIFIED.
- DESIGN PRESSURE IS ±20" W.G., UNLESS OTHERWISE SPECIFIED.
- THE COMPRESSED AIR REQUIREMENT IS BASED ON CLEAN, DRY, OIL FREE AIR @ 90-100 PSIG (BASED ON BAG LENGTH), 8 SECOND OFF-TIME, AND 0.15 SECOND ON-TIME. A DEW POINT OF -20° F IS SUFFICIENT.
- AS STANDARD, EXTERIOR CARBON STEEL SURFACES ARE SOLVENT WIPED PER SSPC-SP1, POWER TOOL CLEANED PER SSPC-SP3, AND COATED WITH A MEDIUM OIL ALKYD PRIMER @ 2 MILS D.F.T. TEMPERATURE LIMITATIONS OF C.P.E.F. STANDARD PAINT IS 200° F. (OTHER PRIMERS & FINISH COATS ARE AVAILABLE).
- AS STANDARD, SOLENOID VALVES ARE PRE-WIRED TO THE TIMER AND MOUNTED IN A COMMON NEMA 4 ENCLOSURE (OTHER ENCLOSURES ARE AVAILABLE). TIMER & SOLENOIDS ARE RATED FOR 1 PH/60 HZ/120 V.
- HOPPER HEIGHT DIMENSIONS ARE BASED ON A 10" SQUARE MATERIAL DISCHARGE OPENING AND A 60° SLOPE FROM HORIZONTAL (OTHER SIZES AVAILABLE).
- ESTIMATED WEIGHTS ARE BASED ON STANDARD ASSEMBLED UNITS, INCLUDING BAGS & CAGES, EXCLUDING ANY AUXILIARIES.
- THIS DRAWING IS TO BE USED FOR LAYOUT AND ENGINEERING PURPOSES ONLY. IT IS NOT TO BE USED FOR CONSTRUCTION, UNLESS STAMPED AS CERTIFIED.

REV BY DATE DESCRIPTION

--	--	--	--

THIS DOCUMENT IS THE EXCLUSIVE PROPERTY OF CPE FILTERS, INC. AND SHALL NOT BE REPRODUCED OR DISTRIBUTED WITHOUT FIRST OBTAINING THE PERMISSION OF CPE FILTERS, INC. © COPYRIGHT.

CPE FILTERS, INC.
 5 EARL COURT, SUITE 130
 WOODRIDGE, IL 60517
 P: 630-771-9993
 E: info@cpef.com
 Web: www.cpef.com

SCALE: _____ INITIATED BY: _____ DRAWN BY: _____
 DATE: _____ APPROVED BY: _____

TITLE: NUISNANCE FILTER-TOP REMOVAL W/ ROOF DOORS - PLANOGRAPH
 CUSTOMER: _____ DWG. NUMBER: P-TNPD-001 REV. 0