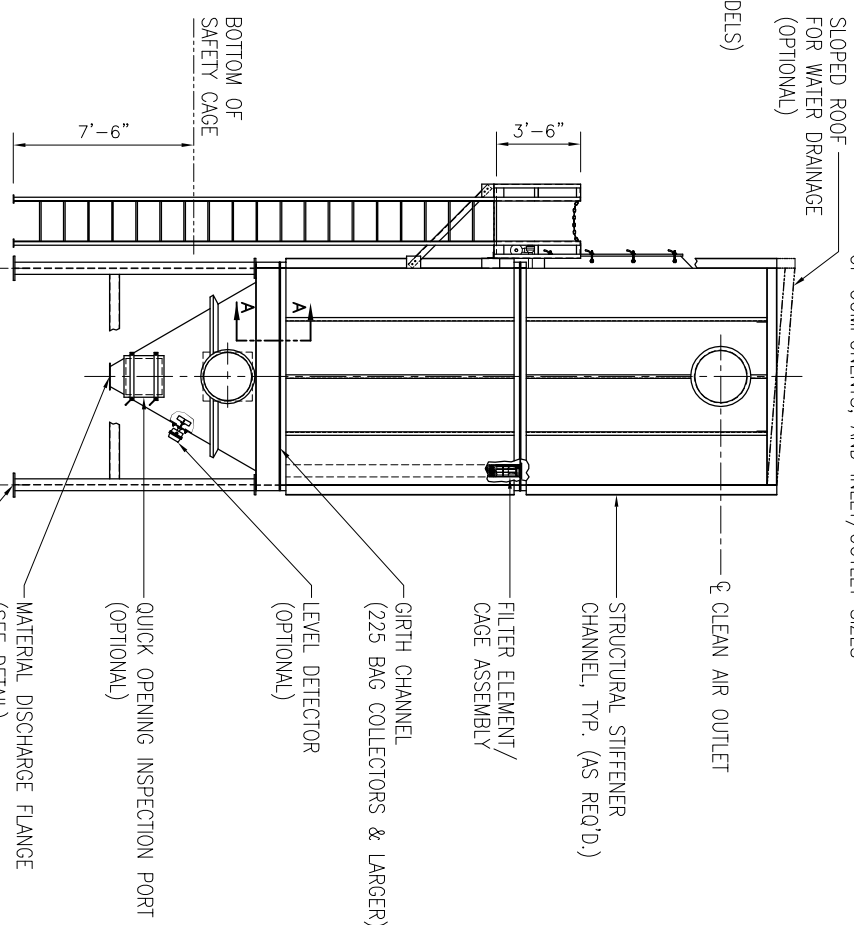
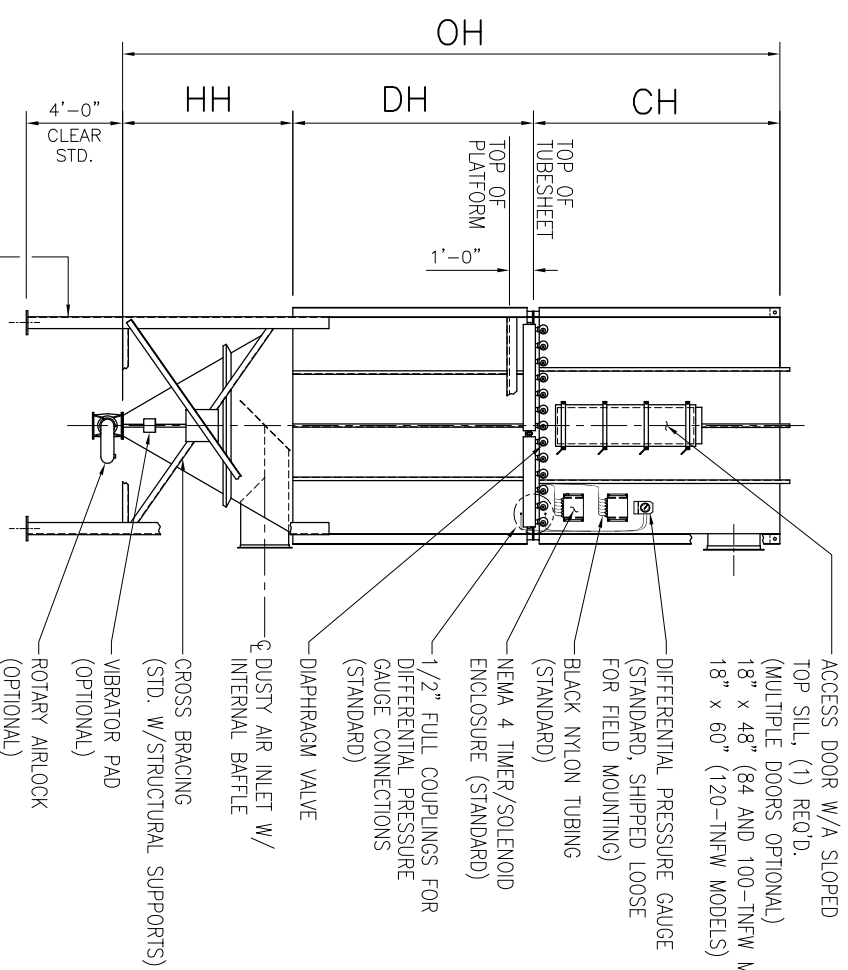
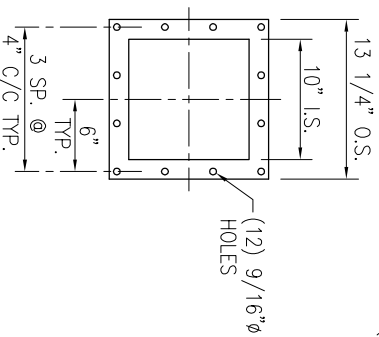


COMPONENT ORIENTATION & OPTIONS
CUSTOMER TO INDICATE MODEL, LOCATION OF COMPONENTS, AND INLET/OUTLET SIZES



SECTION A-A



MATERIAL DISCHARGE FLANGE DETAIL
(C.P.E.F. STANDARD, OTHER SIZES & BOLT PATTERNS DRILLED UPON REQUEST)

MODEL	FILTER AREA SQ. FT.	L	W	HH	DH	CH	OH	NO. OF AIR REQ'D. VALVES (SQM)	EST. WT. (LBS.)
84-TNFW-049	534	5'-0"	5'-0"	3'-8"	7'-3"	7'-3"	18'-2"	7	3,800
100-TNFW-049	637	5'-0"	5'-0"	3'-8"	8'-7"	8'-7"	20'-10"	7	4,400
84-TNFW-064	698	5'-8"	5'-8"	4'-3"	7'-3"	7'-3"	18'-9"	8	4,400
100-TNFW-064	832	5'-8"	5'-8"	4'-3"	8'-7"	8'-7"	21'-5"	8	4,600
84-TNFW-081	883	6'-4"	6'-4"	4'-10"	8'-7"	8'-7"	19'-4"	9	5,000
100-TNFW-081	1,053	6'-4"	6'-4"	4'-10"	8'-7"	8'-7"	22'-0"	9	5,800
84-TNFW-100	1,090	7'-0"	7'-0"	5'-5"	7'-3"	7'-3"	19'-11"	10	5,500
100-TNFW-100	1,300	7'-0"	7'-0"	5'-5"	8'-7"	8'-7"	22'-7"	10	6,300
120-TNFW-100	1,560	7'-0"	7'-0"	5'-5"	10'-3"	10'-3"	25'-11"	10	7,500
100-TNFW-121	1,573	7'-8"	7'-8"	6'-0"	8'-7"	8'-7"	23'-2"	11	8,000
120-TNFW-121	1,888	7'-8"	7'-8"	6'-0"	10'-3"	10'-3"	26'-6"	11	8,700
100-TNFW-144	1,872	8'-4"	8'-4"	6'-6"	8'-7"	8'-7"	23'-8"	12	8,800
120-TNFW-144	2,246	8'-4"	8'-4"	6'-6"	10'-3"	10'-3"	27'-0"	12	10,000
100-TNFW-169	2,197	9'-0"	9'-0"	7'-1"	8'-7"	8'-7"	24'-3"	13	9,800
120-TNFW-169	2,636	9'-0"	9'-0"	7'-1"	10'-3"	10'-3"	27'-7"	13	11,200
100-TNFW-196	2,548	9'-8"	9'-8"	7'-8"	8'-7"	8'-7"	24'-10"	14	11,400
120-TNFW-196	3,058	9'-8"	9'-8"	7'-8"	10'-3"	10'-3"	28'-2"	14	12,900
100-TNFW-225	2,925	10'-4"	10'-4"	8'-3"	8'-7"	8'-7"	25'-5"	15	14,500
120-TNFW-225	3,510	10'-4"	10'-4"	8'-3"	10'-3"	10'-3"	28'-9"	15	16,200
100-TNFW-256	3,328	11'-0"	11'-0"	8'-10"	8'-7"	8'-7"	26'-0"	16	15,400
120-TNFW-256	3,994	11'-0"	11'-0"	8'-10"	10'-3"	10'-3"	29'-4"	16	17,000
100-TNFW-289	3,757	11'-8"	11'-8"	9'-5"	8'-7"	8'-7"	26'-7"	17	17,700
120-TNFW-289	4,508	11'-8"	11'-8"	9'-5"	10'-3"	10'-3"	29'-11"	17	19,700
100-TNFW-324	4,212	12'-4"	12'-4"	10'-0"	8'-7"	8'-7"	27'-2"	18	19,100
120-TNFW-324	5,054	12'-4"	12'-4"	10'-0"	10'-3"	10'-3"	30'-6"	18	20,500
100-TNFW-361	4,693	13'-0"	13'-0"	8'-7"	8'-7"	8'-7"	27'-9"	19	20,500
120-TNFW-361	5,632	13'-0"	13'-0"	10'-7"	10'-3"	10'-3"	31'-1"	19	22,800

- OUTLET SIZES SHALL BE BASED ON A RECOMMENDED 3,000-4,000 FT./MIN. AIR VELOCITY, UNLESS OTHERWISE SPECIFIED.
- INLET SIZES SHALL BE BASED ON A RECOMMENDED 3,500-4,500 FT./MIN. VELOCITY, UNLESS OTHERWISE SPECIFIED.
- DESIGN PRESSURE IS ±20" W.G., UNLESS OTHERWISE SPECIFIED.
- THE COMPRESSED AIR REQUIREMENT IS BASED ON CLEAN, DRY, OIL FREE AIR @ 90-100 PSIG (BASED ON BAG LENGTH), 8 SECOND OFF-TIME, AND 0.15 SECOND ON-TIME. A DEW POINT OF -20° F IS SUFFICIENT.
- AS STANDARD, EXTERIOR CARBON STEEL SURFACES ARE SOLVENT WIPED PER SSPC-SP1, POWER TOOL CLEANED PER SSPC-SP3 AND COATED WITH A MEDIUM OIL ALKXD PRIMER @ 2 MILS D.F.T. TEMPERATURE LIMITATIONS OF C.P.E.F. STANDARD PAINT IS 200° F. (OTHER PRIMERS & FINISH COATS ARE AVAILABLE).
- AS STANDARD, SOLENOID VALVES ARE PRE-WIRED TO THE TIMER AND MOUNTED IN A COMMON NEMA 4 ENCLOSURE (OTHER ENCLOSURES ARE AVAILABLE). TIMER & SOLENOIDS ARE RATED FOR 1 PH/60 Hz/120 V.
- HOPPER HEIGHT DIMENSIONS ARE BASED ON A 10" SQUARE MATERIAL DISCHARGE OPENING AND A 60° SLOPE FROM HORIZONTAL (OTHER SIZES AVAILABLE).
- ESTIMATED WEIGHTS ARE BASED ON STANDARD ASSEMBLED UNITS, INCLUDING BAGS & CAGES, EXCLUDING ANY AUXILIARIES.
- THIS DRAWING IS TO BE USED FOR LAYOUT AND ENGINEERING PURPOSES ONLY. IT IS NOT TO BE USED FOR CONSTRUCTION, UNLESS STAMPED AS CERTIFIED.

REV	BY	DATE	DESCRIPTION

THIS DRAWING SUPERCEDES DRAWING # PG-106-1

THIS DOCUMENT IS THE EXCLUSIVE PROPERTY OF CPE FILTERS, INC. AND SHALL NOT BE REPRODUCED OR DISTRIBUTED WITHOUT FIRST OBTAINING THE PERMISSION OF CPE FILTERS, INC. © COPYRIGHT.

CPE FILTERS, INC.
5 EARL COURT, SUITE 130
WOODRIDGE, IL 60517
P: 630-771-9933
E: info@cpefi.com
Web: www.cpefi.com

SCALE: _____ INITIATED BY: _____ DRAWN BY: _____
DATE: _____ APPROVED BY: _____

TITLE
NUISANCE FILTER-TOP REMOVAL WALK-IN PLENUM-PIANOGRAPH

CUSTOMER
P-TNFW-001 REV. 0